

**CERTIFIED LAND CORNER RECORDATION**

LOCATION S.19   S.20 S.30   S.29 T.14N., R.60W. 6th P.M.	DESCRIPTION OF CORNER EVIDENCE FOUND, AND ORIGINAL RECORD (if known) No evidence of corner monument found, obliterated corner. Corner re-established by ties from Union Pacific Railroad plans (Drawing No. 20699).
--	---

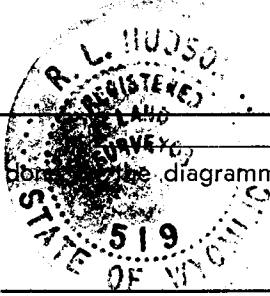
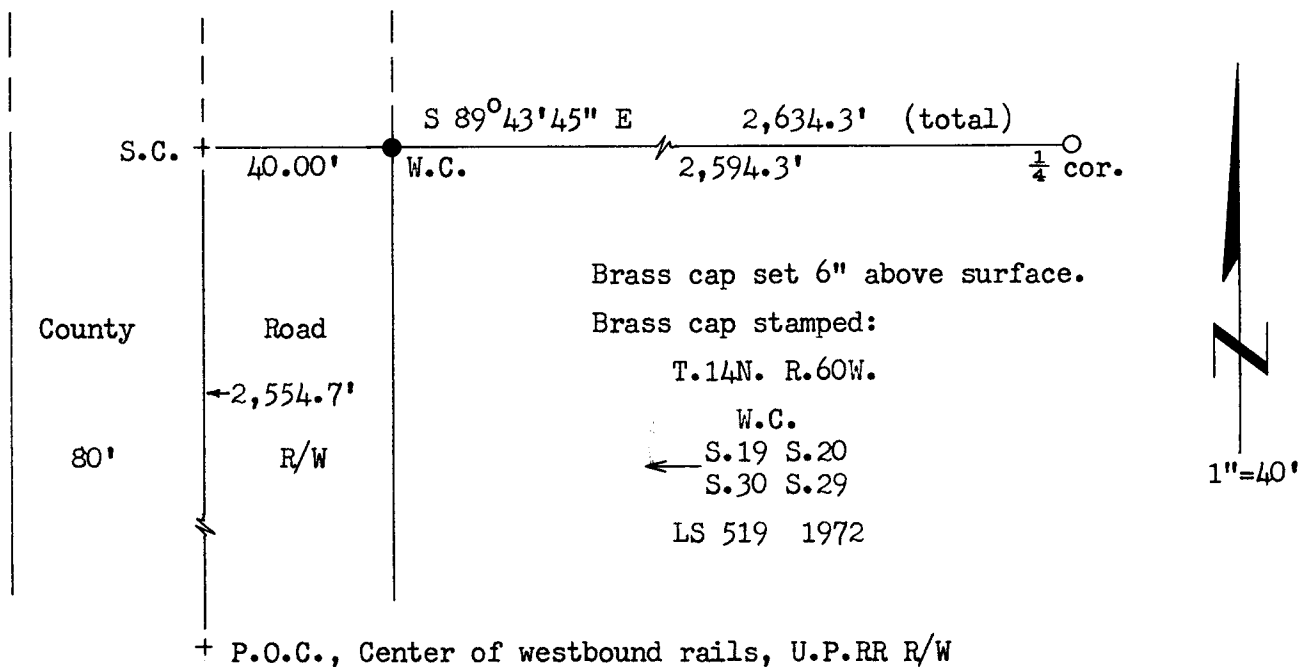
DESCRIPTION OF MONUMENT AND ACCESSORIES ESTABLISHED TO PERPETUATE THE ORIGINAL LOCATION OF THIS CORNER:

Corner falls in County Road, no monument set.

Set  $1\frac{1}{2}$ " dia. x 30" long galv. iron pipe with brass cap as witness; S 89°43'45" E, 40.00 feet distant.

Basis of bearing by solar observation.

SKETCH, WITH COURSE AND DISTANCE TO ADJACENT CORNER IF DETERMINED IN THIS SURVEY.  
(May Sketch or Paste Reproduction on Reverse Side.)



R.L. Hudson certify that I have carefully performed or reviewed the work on the diagrammed corner as reported on this recordation form and approve the same.

R.L. Hudson Wyoming L.S. No. 519  
 Signature of Surveyor Registration No.

STATE OF WYOMING,  
Office of Clerk and Recorder,  
County of Laramie

This "corner record" was filed for record on the 12th day of May, 19 72, was noted on the cross-index plat and is assigned page No. 14-60, in book No. ONE.

John B. Hillman AW  
 County Official

Cross Index No. _____	T. _____	R. _____	Mer. _____
_____	T. _____	R. _____	Mer. _____
_____	T. _____	R. _____	Mer. _____
_____	T. _____	R. _____	Mer. _____
_____	T. _____	R. _____	Mer. _____
_____	T. _____	R. _____	Mer. _____
_____	T. _____	R. _____	Mer. _____